



LIGHTING FIXTURE MFG.

Vapor Tite 4' & 8'

For Wet and Damp Locations

Description

V&J Lighting Fixture Gasketed Enclosures are **dust and moisture resistant** and require the installation of a striplight or channel type lighting fixture. The enclosures are composed of a **fiberglass body** and a **high impact acrylic / DR crepe pattern diffuser** positioned into the **continuous gasketed upper body** slot and securely held in place by **celcon retaining latches** that assure a **continuous seal**.

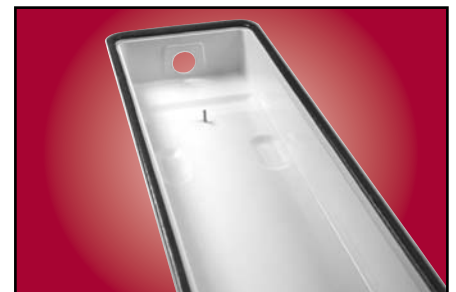
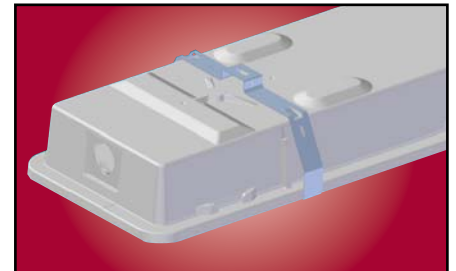
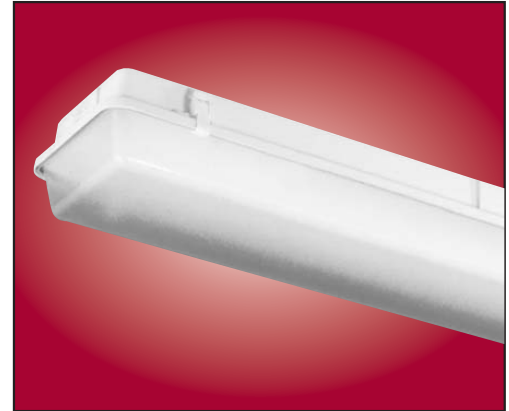
By installing a U.L. listed fluorescent strip light or channel type lighting fixture into the **V&J Lighting Fixture** Gasketed Enclosure and submitting the entire unit to Underwriters Laboratories, a U.L. Listed fixture suitable for **use in wet or damp locations** can be realized.

En-Seal™

new **V&J Lighting Fixture gasketing** offers unprecedented resistance to water absorption. **V&J Lighting Fixture** gasketing tested 100% moisture free after 144 hours of submersion as compared to conventional foam gasketing where complete saturation is reached within 1 hour.

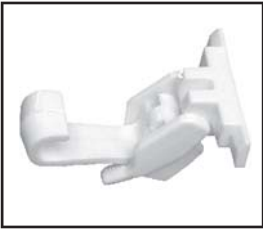
Bracket for Vapor Tight Fixtures

Lighting offers a new bracket system for the **V&J Lighting Fixture** vapor tight enclosures. This versatile new bracket is revolutionary in its simplicity.



Enclosed/Gasket Latches

SERIES DATA



LCW (standard)
Molded Celcon
White Latch

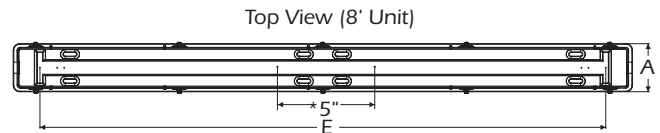
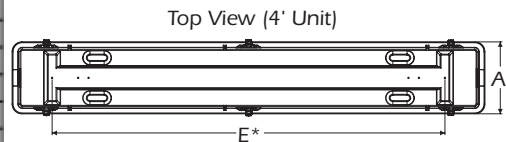
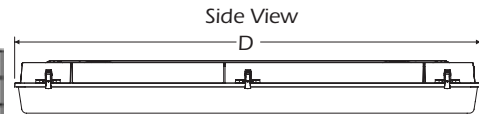
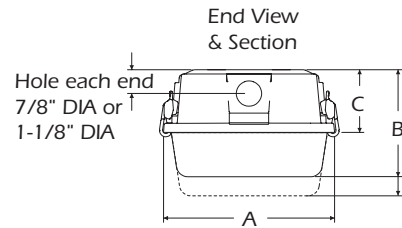
Used for general purpose applications.

The **LCW Standard Latch**, the general purpose latch, enables you to be more selective in your choice of latches for use in your final environment. It should be noted, the LCW Latch will be shipped as the standard, unless specified otherwise. Here are other Latch choices that you can choose from.

LPC- Molded Polycarbonate White Latch Used in acid type atmosphere. (optional)

Cat No. A B C D E
4 Foot 7-5/8" 5-5/8" 2-13/16" 49-59/64" 38-3/4"

Cat No. A B C D E
8 Foot 7-5/8" 5-5/8" 2-13/16" 97-15/16" 86-3/4"



*=Stud Location (internal)

Catalog No.	Lamps	Voltage	Length	Type
F-VT132	1 T8	120V-277V	48"	Bi-pin Shunted
F-VT232	2 T8	120V-277V	48"	Bi-pin Shunted
F-VT232-EMG	2 T8 (Emergency)	120V-277V	48"	Bi-pin Shunted
F-VT2232	4 T8 Tandem	120V-277V	96"	Bi-pin Shunted
F-VT296T8	2 T8	120V-277V	96"	Slimline
F-VT296T8EMG	2 T8 (Emergency)	120V-277V	96"	Slimline
F-VT296T8HO	2 T8	120V	96"	HO
F-VT296T8HO-277	2 T8	277V	96"	HO

Applications

Food Processing Facilities
 Kitchens
 Parking Garages
 Car Washes
 Schools
 Government Facilities
 Industrial Facilities
 Public Areas

Approvals and/or Listings

Underwriters Laboratories
 NSF International
 U.S. Department of Agriculture
 Canadian Standards Association

Features:

STRUCTURALLY RIGID FIBERGLASS BODY

Body is fiberglass reinforced polyester and self-extinguishing (ASTMD635-74). This type of construction does not allow the body to flex during handling and installation.

GASKETED DIFFUSER RETENTION SLOT

The gasketed inverted U-slot provides a positive continuous seal between body and diffuser.

BRASS FIXTURE MOUNTING STUD

The fixture studs are integrally molded into the body to facilitate lighting fixture installation.

HIGH IMPACT ACRYLIC/DR DIFFUSER

Internal crepe pattern allows a smooth exterior surface for ease of cleaning.

DIFFUSER

The diffuser flange fits snugly into the gasketed retention slot forming a continuous seal.